

2020

"ALTHOUGH THE WORLD
IS FULL OF SUFFERING,
IT IS FULL ALSO
OF THE *Overcoming* OF IT."

-HELEN KELLER

Resilient



2020 ANNUAL REPORT



FROM THE *Director*

Our very survival depends on our ability to stay awake, to adjust to new ideas, to remain vigilant and to face the challenge of change.

MARTIN LUTHER KING, JR.

The year 2020 will not be soon forgotten. It will be known for a year those, young and old, faced a threat like no other, COVID-19. As a community we learned new ways of living and functioning. We masked up, learned to Zoom and sanitized like never before. Yet, at the heart of community there was the ever-present drive to take care of our fellow citizens, regain our economy and learn how to live from a position of strength and appreciation.

Community Resilience is the ability to respond and recover after an adverse situation. Coming through adversity is possible when the people, services, and infrastructure in the place we live, and work come together for the greater societal good. The Foundation, because of our donors, partners and leadership, responded immediately to the call to action for helping support our community in areas of need that included threats to our Social, Environmental and Economic wellbeing. For instance, we were socially challenged with isolation that included remote office environments, separation from loved ones in skilled nursing facilities and the hospital. Environmentally we learned to adapt to safety measures including wearing masks and other PPE (personal protection equipment), plexiglass barriers in business settings, curbside pickup for groceries and our favorite restaurants. Economically, our friends and neighbors faced revenue depletion and even business closures, layoffs and other access to basic needs faced more in our communities than I have ever seen in my lifetime.

And the year 2020 wasn't just about the pandemic. Attention across our society was also cast in areas of race and diversity during 2020, calling attention to social justice and inclusion efforts in our schools, workplace, faith institutions and communities.

I am so proud of the leadership at the Foundation, our staff, our community partners and our donorship. Whatever we faced, we faced it together. Talents and resources were leveraged from all sectors—public, private and philanthropic. By uniting the passion and commitment of donors, advisors, partners, and nonprofits, we helped support solutions that will continue to affect lives for years to come. Grantmaking may possibly never have been so important as in the year 2020. We are grateful we would fill a part of this role in Central Kansas.

We work, we grow, we learn, we adapt. We have unified strength.

WE ARE *Resilient*

May this annual report shine some light on the investments made in our service area and may it always be a reflection of the collective good of the people and systems that make up community!

Angie Tatro,
Executive Director





OUR RESILIENT

Leadership

2020



CKCF BOARD OF DIRECTORS

Jennifer Vogts, Chair
Joel Gaeddert, Immediate Past Chair
Rachel Swartzendruber Miller, Vice Chair
Becky Wolfe, Vice Chair Elect
Rod Kreie, Treasurer
Brad Bartel, Secretary
Jason High, Finance Committee Chair

Amy Budde
Carrie Herman
Tim Hodge
Todd Kasitz
Ron Lang
Linda Ogden
NM Patton

James Regier
Anthony Roy
Myron Schmidt
Don Voth
Marge Warta
Allen Wedel
Jon Zerger



CKCF STAFF - 2020

Angie Tatro, Executive Director
Becky Nickel, Affiliate Liaison
Michelle Critchfield, Grants Program Officer
Kristie Diller, Program Director Grants & Scholarships
Melinda Newell, Accounting Clerk
Ashley Bridgeman, Marketing Communications Assoc.
Susan Lamb, Disaster Response Coordinator



CKCF AFFILIATE STAFF

Shana Smith, Director
Hesston Community Foundation
Virginia Martens, Director
Hillsboro Community Foundation
Macey Meuller, Director
Halstead Community Foundation
Becky Nickel, Director
Peabody Community Foundation

GRANT RECIPIENT

Spotlight

RECIPIENT: NEWTON CHILDREN'S CHOIR

FUNDING AFFILIATE: NEWTON COMMUNITY FOUNDATION

GRANT AWARDED: \$1,840

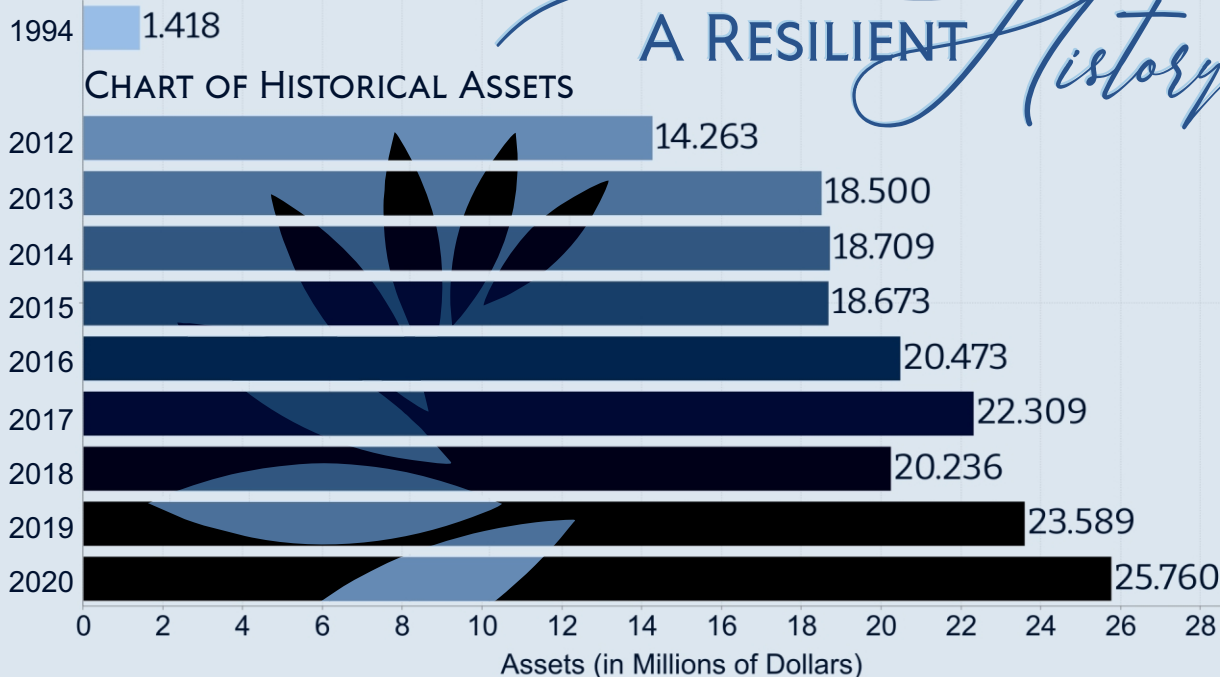
The Newton Community Children's Choir has just begun its 29th season seeking to encourage and inspire students' passion for singing by providing the opportunity to experience excellence in the learning and performance of choral music. The choir performs at many events in our community throughout the year including Bethel College's Fall Festival, Apple Blossom Festival, Taste of Newton and more. In a typical year, the endowment provides funding for scholarships for singers who might otherwise be unable to participate! We are so thankful to be partnered with the Newton Community Foundation and appreciate their support of the Newton Community Children's Choir.

- Jill Siebert



CENTRAL KANSAS COMMUNITY FOUNDATION
STATEMENTS OF FINANCIAL POSITION
DECEMBER 31, 2020 & 2019

ASSETS	2020	2019
Cash and cash equivalents	\$ 386,754	1,264,649
Prepaid expenses	10,253	6,103
Assets held under trust agreements	718,306	664,183
Investments	24,643,702	21,652,822
Fixed assets, net	<u>1,436</u>	<u>2,099</u>
Total assets	25,760,451	23,589,856
LIABILITIES		
Accounts payable and accrued expenses	\$ 12,156	2,657
Paycheck Protection Program loan	54,200	-
Remainder trust funds payable	297,650	297,386
Assets held for others as agent	<u>2,372,322</u>	<u>2,255,858</u>
Total liabilities	2,736,328	2,555,901
NET ASSETS		
Without donor restrictions	\$ 21,471,315	19,541,559
With donor restrictions	<u>1,552,808</u>	<u>1,492,396</u>
Total net assets	<u>23,024,123</u>	<u>21,033,955</u>
Total liabilities and net assets	25,760,451	23,589,856



2020

Affiliate ASSETS

COMMUNITY FOUNDATIONS

Agusta CF	\$176,741
CKCF	\$5,901,653
Douglass CF	\$333,253
El Dorado CF	\$2,321,116
Elk County CF	\$56,961
Florence CF	\$212,777
Fredonia Area CF*	\$348,066
Goessel CF	\$293,858
Halstead CF	\$1,198,739
Hesston CF	\$1,394,457
Hillsboro CF	\$3,532,684
Newton CF	\$5,654,705
North Newton CF	\$494,701
Peabody CF	\$980,033
Remington Area CF	\$264,805
Valley Center CF	\$280,462

NON-COMMUNITY FOUNDATIONS

Newton Public Library	\$1,160,712
Trinity Heights UMC	\$734,030
Women's CF	\$92,236

*Inc. Franklin T. Gaines &
Beverly J. Tipton Foundation

Agency
\$60,347

Unrestricted
\$69,220

Scholarship
\$105,970

Designated
\$493,392

\$1,338,344
TOTAL
COMMUNITY
IMPACT

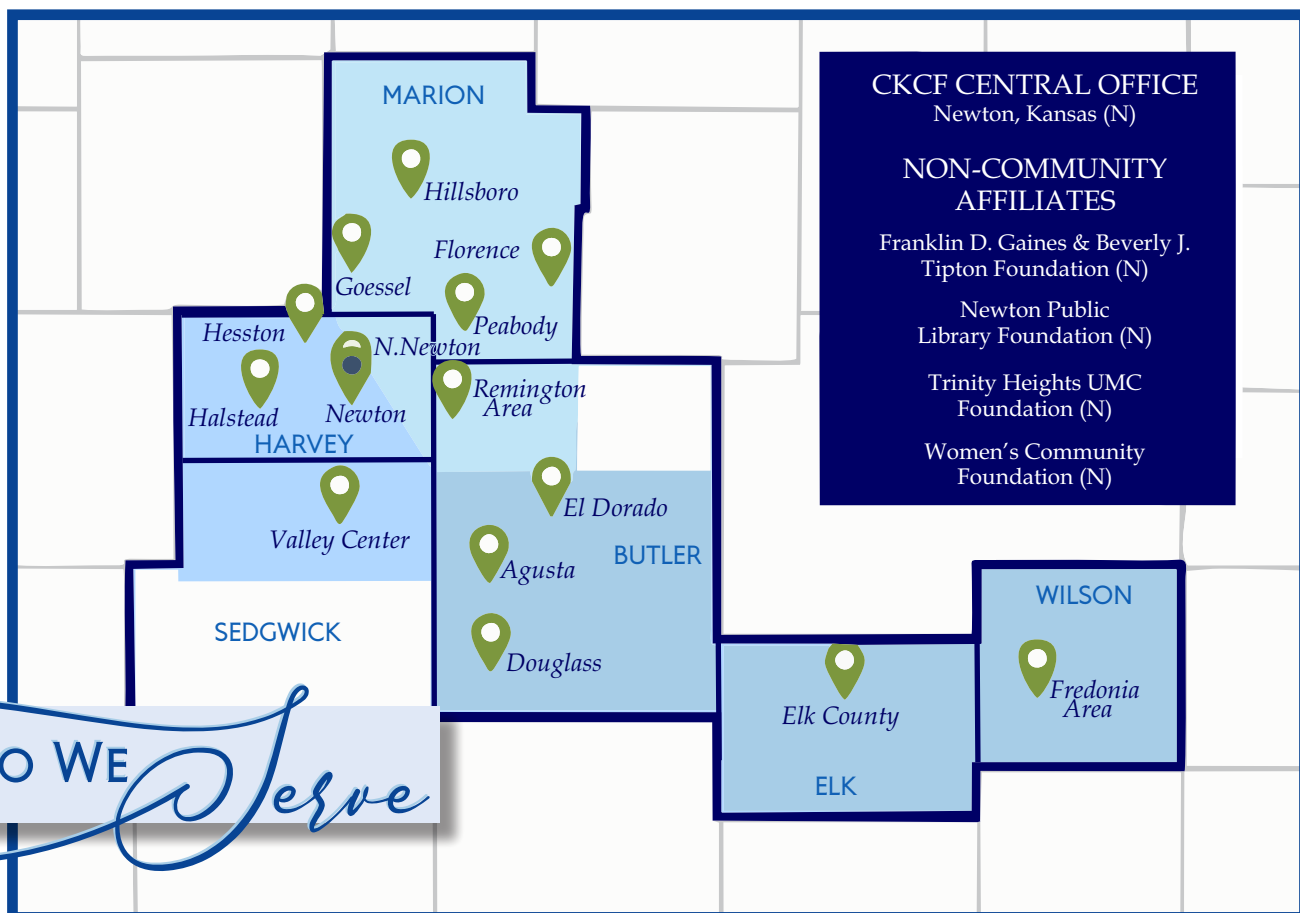
Donor
Advised
\$337,965

Field of
Interest
\$233,289

Education
\$38,161

GRANTS

Funded BY TYPE



WHO WE

Serve

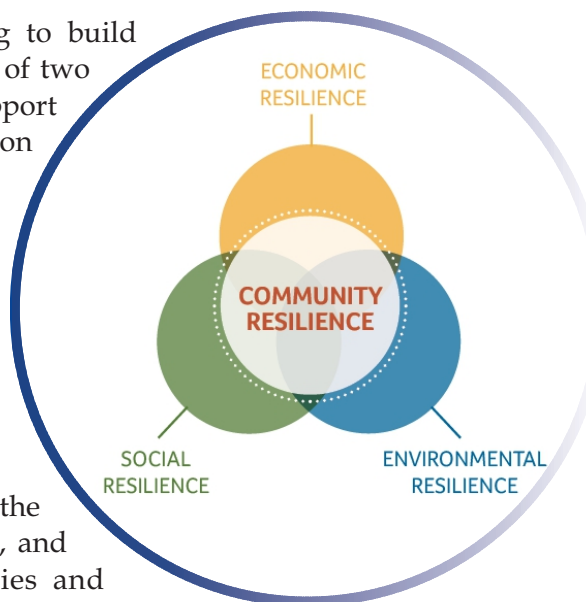


Central Kansas Community Foundation and the Harvey County Administrator entered a partnership to manage the grant application, review, and award process for the final phase of the CARES Act distribution. CKCF was a logical collaborator because of their experience with grantmaking and their deep investment in relationships across the county. The availability of a solid software program and staff with expertise in grant making

streamlined the process which was on a tight timeline. Support was categorized into six sections which are listed below along with the amount available and awarded in each category.

Peace Connections of Newton serves all our county working to build relationships, resources, and resilience. This organization was a recipient of two CARES funding grants; one was used for food and utility assistance to support their clients and the other for IT improvements to maintain communication with clients.

Regarding the CARES Act funds, Jennifer Rose, Executive Director of Peace Connections shared, made it possible for us to host virtual and hybrid meetings within the organization (Board/Committee meetings), as well as host our first-ever online Getting Ahead Graduation, and created space for Circle of Hope families and volunteers to meet virtually. In addition, electronic storage is more secure and backed up to another location."



Jennifer also added, "Thanks to funding through the CARES Act, we were able to assemble, package, and deliver fresh meals for Circle of Hope families and homebound volunteers during the COVID pandemic in 2020. This not only provided a healthy meal once a week, but also maintained relationships and connection in a time of isolation and loneliness. Thank you!"

Hesston Area Senior Center was also a recipient of CARES funding and used their grant to cover several insurance expenses for the organization. During the pandemic HASC continued to provide congregant meals for more than 120 people in their service area and maintaining the facility was crucial during this time.

Yawna Smith, HASC director shared, "The CARES Act funding in 2020 assisted Hesston Area Senior (HAS) Center in sustaining essential functions and operation costs throughout the COVID-19 Pandemic. HAS relies heavily on grants, fundraising activities, and individual contributions. The CARES Act funding assisted with reimbursement of lost revenue throughout 2020, which helped ensure the continuation of Friendship & Meals on Wheels, foot care clinics, Medicare Part D enrollment and other essential functions held at HAS throughout all of 2020. The reimbursement of Personal Protective Equipment, as well as cleaning and hygiene supplies were also provided by the CARES Act funding for the safe reopening of activities at HAS in 2021. HAS is thankful for the hard work of CKCF and Harvey County in awarding CARES Act funding to Harvey County organizations throughout the COVID-19 Pandemic."

The opportunity for Central Kansas Community Foundation to partner with Harvey County on this initiative to support multiple agencies and their clients through the CARES Act was a unique opportunity that opened new doors and solidified existing relationships.



CARES ACT PROGRAM	AWARDED
COMMUNITY TESTING	\$615,782.23
COMMUNITY SUPPORT	\$81,089.45
LONG-TERM CARE	\$236,213.68
PRIVATE SCHOOLS/COLLEGES	\$177,043.65
PUBLIC HEALTH GRANT	\$404,108.64
SENIOR CENTERS	\$72,412.24
TOTAL	\$1,586,649.89

the Year 2020

GRANT REVIEW

Community resilience is the sustained ability of a community to use available resources to respond to, withstand, and recover from adverse situations. This allows for the adaptation and growth of a community after disaster strikes. Meeting the Social, Economic and Environmental needs during and following an event help move a community toward a phase of recovery. These examples show how our communities were helped.



New windows installed at the Parkview Village in Fredonia, KS.

2020 COMMUNITY RESPONSE

COVID-19 FUNDS	DONATIONS	GRANTS
DOUGLASS CF	\$1,800.00	\$1,000.00
EL DORADO CF	\$4,830.00	\$4,830.00
GOESSEL CF	\$1,700.00	\$0.00
HARVEY COUNTY:		
CKCF, Halstead, Hesston, Newton, North Newton, and USD373	\$82,480.00	\$74,759.20
HILLSBORO CF	\$7,060.00	\$5,400.00
PEABODY CF	\$6,628.00	\$4,206.00
REGION WIDE	\$15,644.64	\$12,300.00
VALLEY CENTER CRF	\$10,000.00	\$5,000.00

2020 COMMUNITY RESPONSE

FUNDING TOTALS	\$130,142.64	\$107,495.20
----------------	--------------	--------------

SOCIAL *Examples*

Social - The Hesston High School Swather Sports Network's objectives at the beginning of their project were to expand their Audio/video production abilities in order to serve our community a wider scope--especially with the needs COVID presented.

Social - The School Counseling Department at Valley Center Intermediate built a Social/Emotional Resource Library. The purpose of the Social/Emotional Resource Library is to give additional resources/books for teachers and staff to use with their students during Homeroom time. The "Be the Change" curriculum supports teachers' focus on Caring for others, Helping one another, Always doing what is right, Never giving up, Get it done, and Everyone has value.

ECONOMIC *Examples*

Economic - Trinity Heights Respite Care Grant funds went towards the payroll for employees and helped to cover extra hours to the families needing respite during a difficult year.

Economic - Peabody's Family Financial Assistance Network (FFAN) gave emergency financial assistance to Marion County households that were unable to pay for basic services necessary for family health and safety. The Peabody area FFAN also provided emergency financial assistance for utility services, rent, health services, medications or other critical services.

Economic - The Tabor Mennonite Church Food Pantry in Goessel used grant funds to buy groceries and to issue food vouchers to households in need.

ENVIRONMENTAL *Examples*

Environmental - Main Street Beautification - The 4-H club members in Halstead were involved in the project from the beginning by planting the plants with Stone Creek Nursery in Hesston. The 4-H club members watered the plants throughout the summer. The Halstead community was able to enjoy the planters the entire summer.

Environmental - Historic Preservation - The Wilson County Historical Society & Museum Archival Garment Storage in Fredonia purchased archival grade preservation / storage boxes and acid-free tissue paper.

Environmental - The Housing Authority of the City of Fredonia, Parkview Village Window Project spent grant funds locally for the purchase of windows. The installation of the windows was completed by Fredonia Housing staff.



CENTRAL KANSAS COMMUNITY FOUNDATION
BUILDING STRONGER COMMUNITIES THROUGH CHARITABLE GIVING

Join us

You have many options when considering a charitable gift to Central Kansas Community Foundation or one of our affiliates. You may make an immediate designated gift, give to an existing fund, establish your own fund, leave a legacy gift or establish a lifetime income plan. Your gift may be cash, an IRA RMD, appreciated stock, gifts of real estate or other tangible assets.

Contact us to assist you in making your charitable intentions a reality.

CONTACT US

CENTRAL KANSAS COMMUNITY FOUNDATION
301 N. MAIN, SUITE 200 | NEWTON, KS 67114

316-283-5474 | WWW.CENTRAALKANSASCF.ORG

