



Building a Tradition of *Giving*



Central Kansas
Community Foundation



CONTENTS

2	A Year in Review
4	Establishing Lasting Gifts
	L. Marie Haun - A Tradition of Strengthening Families
	Marga Ebel - The Gift of Health
7	Create Your Own Tradition of Giving
8	Grantmaking: A Tradition of Giving
	Grants - 2011
	Competitive Grants
12	Foundation Funds: A Tradition of Generosity
	Charitable Funds
	Affiliate Partners
26	Friends of the Foundation: A Tradition of Engagement
34	2011 Financials
	Foundation Board of Trustees and Staff

THE MISSION of the Central Kansas Community Foundation is to encourage philanthropy, strengthen communities and improve the quality of life for residents in Central Kansas communities.

OUR VISION is to be the leader in philanthropy in the communities we serve, connecting donors with meaningful programs and causes, strengthening charitable organizations, providing leadership on local and regional issues and building permanent community resources.



A YEAR IN REVIEW

“A small group of thoughtful people could change the world. Indeed, it's the only thing that ever has.”

Margaret Mead

This quote has been a favorite of mine for years.

The continued success of the Central Kansas Community Foundation and our expanded role as a “host foundation” to more than ten community foundations across Central Kansas, proves the point beyond a doubt. Small groups of thoughtful people are, indeed, changing their world.

Small groups of thoughtful people - the CKCF staff, our board of directors, advisory board members in our affiliate communities, the Women's Community Fund, generous donors, non-profit organizations - are all dedicating themselves to serving the greater good of their communities.

Generous with both their time and personal resources, they are leading by example and proactively starting the dialogue in their communities about the importance of giving something back, particularly through wills, trusts, and estate planning.

And it works! In spite of a faltering economy, or perhaps because of it, more people across Central Kansas recognize that the needs have never been greater. They believe, rightfully so, that they can make a difference.

For example, the secretary who left \$600,000+ for the charitable needs of children across Central Kansas; a retired teacher who gifted \$400,000+ to insure that children's health and wellness would continue to be a priority in her community; the nurse who created a \$250,000 endowed scholarship fund so that others could pursue the career she dedicated her life to; the siblings who created a family tradition of gifting money to a scholarship fund to honor their parents. Our donor stories are endless, and each one illustrates the power of individuals who make the decision to leave their world a better place.



You will find a few of these stories in the pages of this year's annual report, along with an update on the progress of each of our affiliate partners.

Thank you to the many “small groups of thoughtful people” who work in partnership with the Central Kansas Community Foundation!

Sandra Fruit

Sandra Fruit, Executive Director
Central Kansas Community Foundation



CHAIRMAN'S MESSAGE

“Building a tradition of giving” is a powerful theme. We see the concept in action every day in our communities. Neighbors are helping neighbors, giving of their time, talents and treasures.

Never before has helping one another been so important, and giving thoughtful consideration for the future of our communities been so significant. We live in a time when our government is limiting availability to programs that provide education, food and healthcare benefits to children, low-income families and senior citizens; making the availability of vital resources challenging.

The Transfer of Wealth study produced statistics that illustrate by the year 2020, nearly \$2.2 Billion may transfer out of central Kansas communities and more than \$66 Billion may transfer out of the state of Kansas. These numbers are staggering when one ponders the impact this can and will have on all aspects of human existence in our communities.

If the Community Foundation were to capture just 5 percent of this transfer of wealth, \$107 Million could be used for charitable causes over the next eight years. The possibilities for creating a healthy, self-sustaining and progressive community are endless.

Wealth is not a requirement for providing for the betterment of your community. A modest gift of 5 percent to an existing fund with the Foundation could fund programs through charitable organizations in perpetuity. Build your own tradition of giving by joining our efforts – let's strengthen Central Kansas communities together.



Bill Hake, Chairman
Central Kansas Community Foundation

THANK YOU FOR YOUR SERVICE

2011 OUTGOING BOARD MEMBERS

Bill Goering
Harry Wolfe
Kathy Kajinami
Marnette Hatchett
Marsha Howe

2011 OUTGOING STAFF

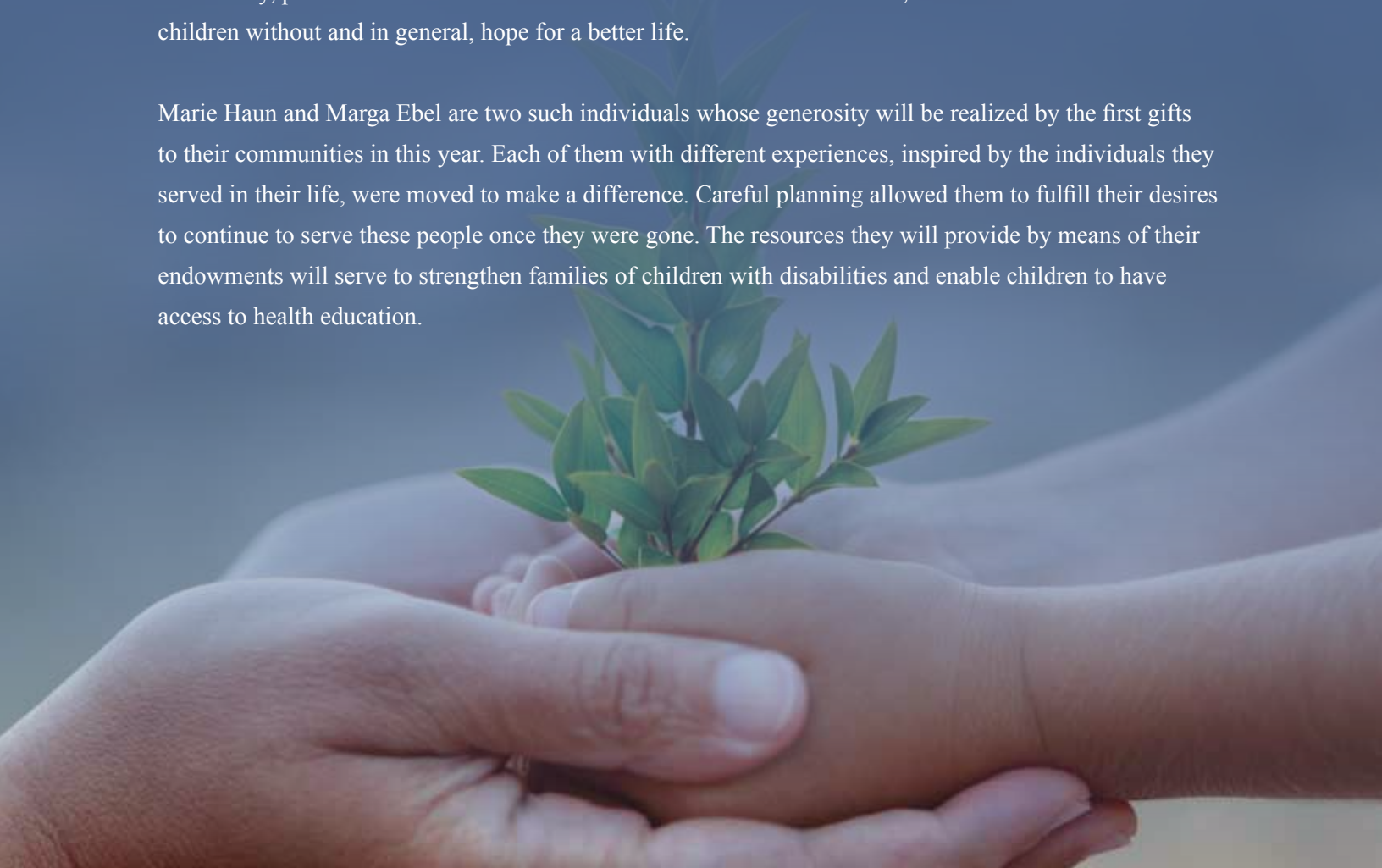
John Torline, *Associate Director*
Ashley Bridgeman, *Marketing/
Program Officer*



ESTABLISHING LASTING GIFTS

EVERY ONCE IN A WHILE an incredibly generous soul establishes a gift with the Foundation that will give long after they are gone - a gift that will provide healthcare to a community, protection and shelter for women and children who are abused, food and basic necessities for children without and in general, hope for a better life.

Marie Haun and Marga Ebel are two such individuals whose generosity will be realized by the first gifts to their communities in this year. Each of them with different experiences, inspired by the individuals they served in their life, were moved to make a difference. Careful planning allowed them to fulfill their desires to continue to serve these people once they were gone. The resources they will provide by means of their endowments will serve to strengthen families of children with disabilities and enable children to have access to health education.





L. MARIE HAUN

A TRADITION OF STRENGTHENING FAMILIES. Born Lena Marie Hood to Homer and Marguerite (Mead) Hood in Carmen, Oklahoma, on March 8, 1922, Marie exhibited an early interest in educating children and later specialized in providing for children with mental health issues.



During her childhood, Marie moved with her parents and sister Dorthy from Carmen to Missouri, Wyoming, and back to Oklahoma. Marie graduated from high school in Carmen and then earned a baccalaureate degree that prepared her for teaching. She taught business at the Whitewater High School just before she met her future husband, Paul Haun. They married on December 23, 1948 and had one son, Larry Kent, in 1950.

Marie began her career as a teacher at Whitewater High School and clearly had a love for children. Throughout her professional life, she held several secretarial positions including a 26-year career as the secretary to the Dean of the College of Health Professions at Wichita State University. Retiring in 2000 at the age of 78, Haun was no stranger to hard work.

At the age of 89, Marie passed away in March 2011, leaving behind a legacy, a tradition of providing for families in the interest of children. Her gift in the amount of \$622,000 to the Foundation established the “Lena Marie Haun Charitable Fund for Children”. The earnings on the fund, expected to generate more than \$30,000 annually will support child welfare issues, behavioral research, parenting skills education and will serve to strengthen families.

A competitive grant cycle for these funds will be open to organizations providing children’s services in Central Kansas. The first opportunity to apply will be in 2013.



MARGA EBEL

THE GIFT OF HEALTH. Marga Ebel loved children. She began her career as a teacher in Rose Hill, Kansas. After a satisfying career in the traditional educational system, Marga found a lasting home with Logopedics, now operating as Heartspring, in Wichita.

There she felt joy working with children with special needs and through her career experienced first-hand how a lack of resources to support the health and growth needs of a child can impact their development.

Marga is described not as a wealthy woman, but a woman who took a great deal of care with regard to what she did have. She was an ordinary person with the capability of giving an extraordinary gift.

When she died in August of 2009 in Hillsboro, Kansas, Marga left behind a legacy that would impact the Hillsboro community in perpetuity. With hard work and planning, she gifted the children of Hillsboro with a \$360,000 endowment, the “Marga Ebel Health Fund”. They will now have a greater opportunity to access the likes of immunizations, WIC nutrition, healthy start programs and childcare licensing through the Marion County Health Department, a school nurse, student dental health coordination through the USD 410 and early childhood services through the Comprehensive Early Childhood Health Initiative.



“This generous gift to USD 410 from the HCF and the Marga Ebel fund will provide for the services necessary for enhanced health and wellness for children and their homes, schools, and communities,”

- Superintendent Steve Noble, USD 410 Hillsboro School District



CREATE YOUR OWN TRADITION OF GIVING

CURRENT GIFTS. The most common way to make an immediate gift is by writing a check. This type of cash gift provides immediate liquidity for charity and generates a charitable income tax deduction for the donor in the year of the gift. You can also give stocks, bonds, real estate and gifts of personal property such as artwork, books and antiques.

PLANNED GIFTS. Next to writing a check, perhaps the best known vehicle for philanthropy is the bequest. A bequest establishes your wishes today without relinquishing needed assets during your lifetime. Bequests can transfer a specific asset or dollar amount, or a percent of your estate after taxes.

10-K CLUB. The 10K Club offers you a way to create a \$10,000 endowment to benefit your favorite charity(ies). Each year, members of the 10K Club contribute \$1,000 to their endowment fund. When the fund reaches \$10,000, the donors can choose to create a donor advised fund and make recommendations each year for the distribution of income to their favorite charities.

INCOME GENERATING. The Gift Annuity is a great example of how a gift generates income for the donor. This is actually a contract between a donor and a charity that is part gift and part annuity. In addition to the annuity payment, the donor receives a charitable tax deduction and a portion of each annuity payment may be tax-free.

The most versatile charitable giving tool, the Charitable Remainder Trust, can bypass capital gains tax on the sale of highly appreciated assets, generate an increase in income, provide a charitable income tax deduction and fulfill your charitable objectives.

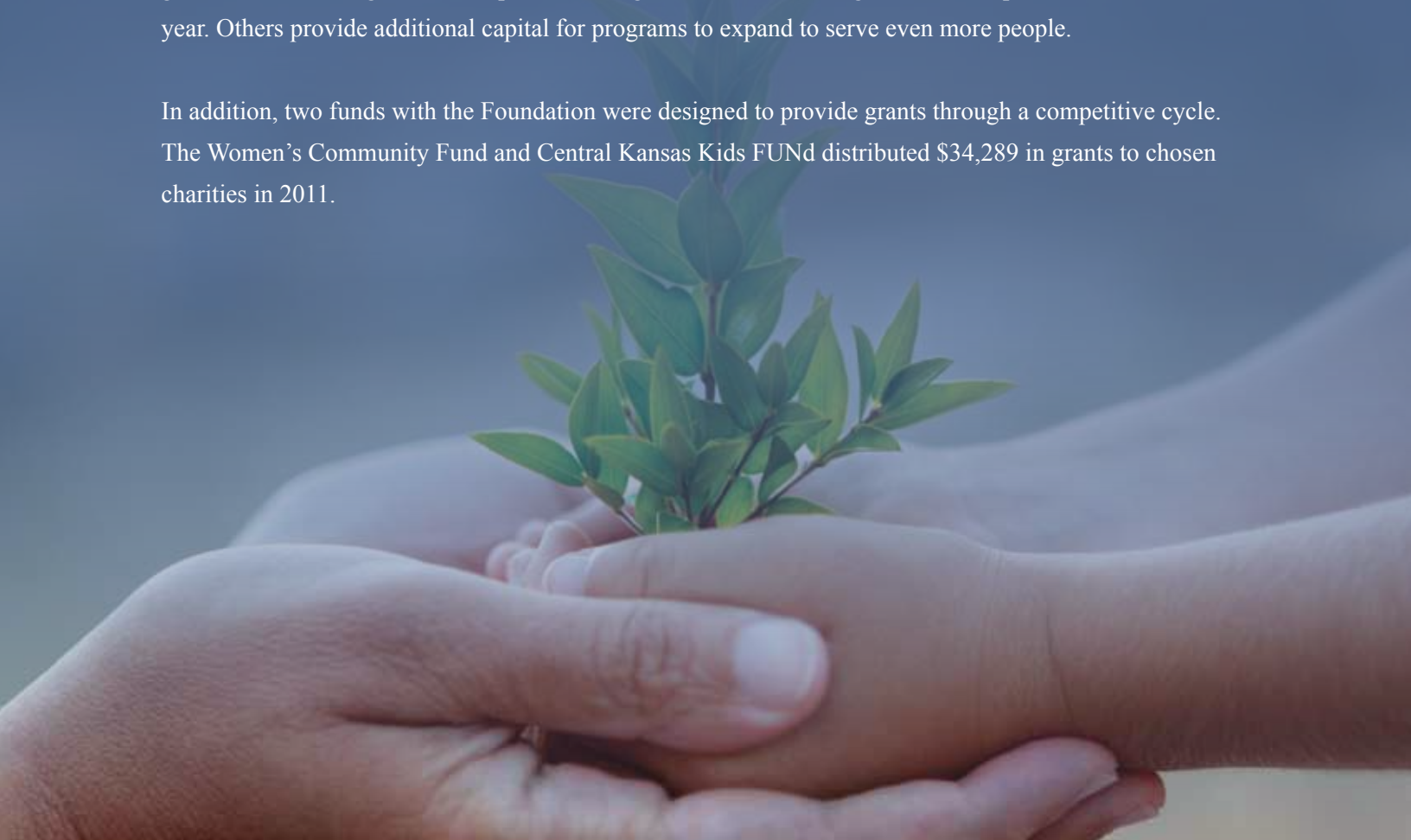
ENDOWMENTS. An endowment provides permanent support for charitable causes. The balance in these funds is invested, earning income that is then spent to support charitable works in perpetuity. The foundation's pooled investment can be used to generate interest. Interest earned can be gifted while the assets remain invested with the donor's personal financial advisor.



GRANTMAKING: A TRADITION OF GIVING

THE REWARD OF GIVING forever impresses its goodness upon the soul of the giver and inspires the human condition. Each year, as the hard work of the Foundation staff comes to fruition, they have the distinct honor of distributing earnings on endowments as donors intended. These gifts, in the form of grants, often provide enough resources for an organization to operate for a calendar year. Others provide additional capital for programs to expand to serve even more people.

In addition, two funds with the Foundation were designed to provide grants through a competitive cycle. The Women's Community Fund and Central Kansas Kids FUNd distributed \$34,289 in grants to chosen charities in 2011.





GRANTS - 2011

The Foundation and its affiliate partners made a significant contribution to its long tradition of charitable giving in 2011. Gifts to the Foundation generated more than \$494,345 for 240 charitable organizations in five counties, across the United States and internationally. These gifts will change lives because of the support provided to a diverse charity base. Lives changed in this tangible and meaningful way means these communities will be better educated, better provided for and sustainable.

Alex's House
All Goessel Area Projects for the Elderly
American Red Cross - Bluestem Branch
American Red Cross - Butler County
Andover Public Library Friends
ARC of Butler County, Inc.
Arizona State University Foundation
Augusta Arts Council
Bethel College
Bethel College
Big Brothers Big Sisters of Marion County
Big Brothers Big Sisters of Harvey County
Birger Sandzen Memorial Foundation
Botanica, The Wichita Gardens
Bradford Memorial Library
Burrton School District USD 369
Butler County
Butler County Community College
Butler County Community College Foundation
C. A. S. T. for Kids Foundation
Caldwell Area Hospital and Health Foundation
Caring Hands Humane Society
CASA: A Voice for Children, Inc.
Central Homecare and Hospice
Chisholm Trail Festival, Inc.
Circle Benton Elementary PTO

City of Andover
City of Augusta
City of El Dorado
City of Florence
City of Hillsboro
City of Newton Kansas
City of Peabody
City of Rose Hill
Coffeyville Community College
Communities in Schools of Marion County
Dyck Aboretum
El Dorado Broncos Collegiate Baseball, Inc.
Emporia State University
Episcopal Diocese of Kansas
Episcopal Social Services
Family Time Training, Inc.
Flinthills Services, Inc. DBA CDDO of Butler County
Florence Historical Society
Friends of Maxwell, Inc.
Friends University
Girl Scouts of Kansas Heartland
Halstead Historical Society
Harvey County Community Partnership, Inc.
Harvey County Domestic Violence and
Sexual Assault Task Force, Inc.
Harvey County Historical Society



Harvey County Homeless Shelter
Harvey County United Way
Health Ministries Clinic, Inc.
Hesston College
Hesston Intergenerational Child Dev Center
Hesston Public Library
Hillsboro Golden Years Club, Inc.
Hillsboro High School
Hillsboro Public Library
Hillsboro School District
Hope Home Repair
Hub, Inc.
Hutchinson Community College
Hutchinson Community College
Endowment Association
International Students, Inc.
John Brown University
Kansas 4-H Foundation, Inc.
Kansas Christian Home
Kansas Foodbank Warehouse
Kansas Learning Center for Health
Kansas Public Telecommunications Service, Inc.
Kansas State University
Larksfield Place Retirement Community
Leadership Butler, Inc.
Lindsborg Arts Council, Inc
Main Street Ministries
Marion County Kansas
McPherson Museum and Arts Foundation
McPherson Opera House Company
Mcpherson Scottish Society
Memorial Home
Mennonite Heritage Museum
Mid Kansas Community Action Program Inc
Mid Kansas Symphony Orchestra
Moundridge Historical Association, Inc.
National Ghost Ranch Foundation Inc
Neighbors Store, Inc.
Newton Community Children's Choir
Newton Community Theatre
Newton Fine Arts Association
Newton Fine Arts Association Inc.
Newton Healthcare Corporation

Newton High School
Newton Meals On Wheels
Newton MidKansas Orchestra Association
Newton Public Library
Newton Treble Clef Club
Numana
Oklahoma Christian University
Oklahoma Panhandle State University
Ozark Christian College
Paul Mitchell the School
Peabody Historical Society
Peabody Main Street Association
Peabody Senior Center
Peabody United Methodist Church
Peabody-Burns USD#398 Elementary School
Peabody-Burns USD#398 High School
Peace Connections
Pittsburg State University
Prairie View, Inc.
Pratt Community College
Rainbows United, Inc.
Raymer Society for the Arts
Saint Francis Community Services, Inc.
Salem United Methodist Church
Salvation Army - Newton
South America Mission
Southwestern College
St. Matthew's Episcopal Church
Sunlight Children's Advocacy and Rights Foundation
Susan B. Allen Memorial Hospital
Tabor College
Tennyson Center for Children
Tri-County CASA
Trinity Heights United Methodist Church
United Methodist Youthville Foundation
University of Kansas
USD #373 Newton
USD #410 Hillsboro
Warkentin House Association
Washburn University
Wichita State University
Youthville



COMPETITIVE GRANTS

KID'S FUND was created in 2005 as a way to ensure that children's programs in Newton would thrive. In 2011, grants in the amount of \$12,889 were awarded to seven charitable organizations with programs serving and meeting the needs of children, including the Summer Food Program, providing food for school-aged children during the summer; Burrton High School for the purchase of a baby simulator and the Bethel College Academy of Performing Arts for their music and dance programs. Grants to date have been supported through the Sand Creek Station Pro-Am Golf Tournament and private contributions from individuals.

USD 373 - NHS Business Professionals of America
St. Francis Community and Residential Services
Peace Connections
CASA
Harvey County DV/SA Task Force, Inc.
USD 369 - Burrton High School
The Bethel College Academy of Performing Arts

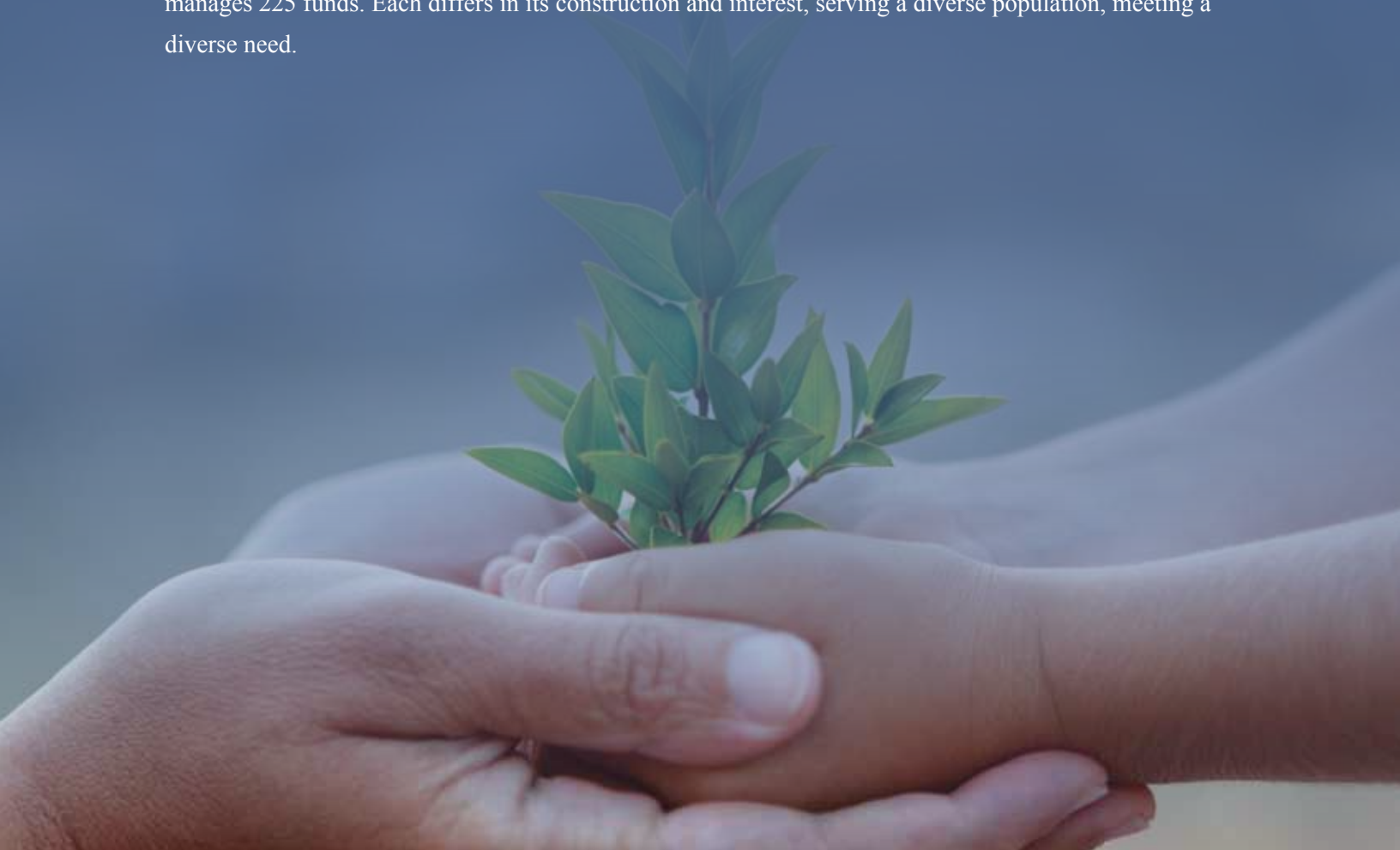
WOMEN'S COMMUNITY FUND made significant changes in 2011, with the addition of a junior level and contributing membership in hopes of encouraging more women in Central Kansas to join the giving circle. The changes provide for several contribution and involvement levels. This year, with donations from its members, the circle of women were able to grant more than \$20,000 to charitable causes in Newton. If you would like more information on becoming a Women's Community Fund member, contact Sandi Fruit at 316-283-5474.

Youthville
St. Matthew's Episcopal Church
C.A.S.T. for Kids Foundation
Harvey County Homeless Shelter
Health Ministries Clinic, Inc.
Harvey County DV/SA Task Force, Inc.
Harvey County Community Partnership, Inc.
HOPE Home Repair



FOUNDATION FUNDS: A TRADITION OF GENEROSITY

IT IS THE FOUNDATION'S ROLE to connect donors with meaningful causes in their communities and encourage giving to charitable organizations that best reflect their ideals, experiences, interests and values. The Foundation, including its affiliate organizations, manages 225 funds. Each differs in its construction and interest, serving a diverse population, meeting a diverse need.





CHARITABLE FUNDS

A variety of donor-directed, discretionary and scholarship funds comprise the Foundation's complete list of funds. In 2011, 28 funds were added, bringing the total to 225 funds.

Adrian and Pankratz, PA 10K Fund
Alan and Jennifer Vogts 10K Fund
Alisa D. Crawford Charitable Fund
B. Marlo and Ruth Ann Dirks Charitable Remainder Fund
Barbara A. and Richard R. McCall 10K Fund
Ben Crawford Charitable Fund
Bethel College Nursing Education Scholarship Endowment Fund
Big Brothers Big Sisters of Harvey County Endowment Fund
Big Brothers Big Sisters of Marion County, Kansas Endowment Fund
Blake Crawford Charitable Fund
Bonnie Selanders USD 373 Scholarship Fund
Botanica Gardens Endowment Fund
Carriage Factory Gallery Endowment Fund
Centennial/ Railer 100 Endowment Fund
Central Kansas Community Foundation Endowed Operating Fund
Central Kansas Community Foundation Operating Fund
Central Kansas Kids Fund
Charles Olson Memorial Instrumental Music Expendable Scholarship Fund
Charles Olson Memorial Instrumental Music Scholarship Fund
Christine and Ralph Bestvater 10K Fund
CKCF Board Designated Operational Fund
David and Barbara Burns 10K Fund
Dennis and Jennifer LeFevre 10K Fund
Donald Bradford and Mary Jean Wells Charitable Trust
Dr. Frances A. Allen Gift Annuity Fund



Dr. Frances Allen Charitable Remainder Unitrust
Dyck Arboretum of the Plains Opportunity Fund
Eleanor B. Ewert Memorial Fund
English Charitable Endowment Fund
Ericka J. Stucky Fine Arts Fund
Florence Historical Society Endowment Fund
Forkner and Gregory Memorial Fund for Harry Hines Memorial Hospice
Forkner and Gregory Memorial Fund for Asbury Park
Forkner and Gregory Memorial Fund for Harvey County Health Ministry Clinic
Frank and Kathy Stucky 10K Fund
Frank L. Spangler Bethel College Scholarship Fund
Frank Spangler Kansas Christian Home Fellowship of John Fund
Hake Family Foundation 10K Fund
Harold and Evelyn Gregg 10K Fund
Harry Hynes Memorial Hospice Donor Restricted Fund
Harvey County Fair Fund
Harvey County Fairgrounds Building Fund
Harvey County Historical Society Endowment Fund
Health Ministries Donor Restricted Fund
Health Ministries of Harvey County, Inc. Endowment Fund
Helen E. Claassen Endowment Fund
Hershberger Family Charitable Fund
Hesston Bethel Performing Arts Endowment Fund
Historic Fox Theatre Fund
J. Michael and Susan Lamb Family Charitable Fund
James B. and Barbara A. Newton Medical Center Clinical Education Endowment Fund
James B. and Barbara A. Stucky Caring Hands Humane Society Endowment Fund
James B. and Barbara A. Stucky Homeward Bound Pug Rescue Endowment Fund
James R. and Sharon S. Wiens 10K Fund
Janie Marie Holstine 10K Fund
Jason and Leigh Stucky Charitable Fund
Jean and Virginia Coleman Music Scholarship Fund
Joan H. and J. Wade Brubacher 10K Fund
John R. and Gwen Suderman 10K Fund
Joy and Joe Robb 10K Fund
Justina D. Neufeld and Floyd G. Bartel 10K Fund
Kansas Health Foundation Fund - Newton
Katharine Jessica Holstine 10K Fund
Kaufman LLC Fund
KHF Operating Endowment Fund - CKCF



L. Marie Haun Charitable Fund for Children
Leadership Marion County Children's Fund
Leadership Marion County Fund
Leadership Newton Children's Fund
Leadership Newton Leadership Fund
Leave a Legacy Fund
Leila Lamar Callendar Fund
Leslie E. and Norma K. Schrag Endowment Fund
Lloyd T. Smith Endowed Charitable Fund
Margaret E. Friesen Gift Annuity Fund
Margaret L. Smith Decker Scholarship Fund
Marissa Faith Miao Burghart Memorial Art Scholarship Fund
Marvin H. Ewert Chaplaincy Endowment Fund
Maxine Krenek Charitable Endowment Fund
McPherson Opera House Preservation Company Endowment Fund
Melvin R. and Donna J. Schadler 10K Fund
Melvina Killion Charitable Endowment Fund
Mike and Carol Petitjean 10K Fund
Montee-Silverstein Fund for Newton Public Library
Mosier Family Endowment Fund
National Ghost Ranch Endowment Fund
Newton Community Children's Choir, Inc. Endowment Fund
Newton Fine Arts Agency Fund
Newton Fine Arts Association Endowment Fund
Newton KidsFUNd 10K
Newton Medical Center Permanent Endowment
Newton Mid Kansas Orchestra Association, Inc. Endowment Fund
Newton Treble Clef Club Scholarship Fund
Novalis Toews Gift Annuity Fund
Nygaard Family Scholarship Fund
Olivia Stucky Charitable Fund
Peace Connections Endowment Fund
Peggy Deitz Endowment Fund
Peggy Hwa 10K Fund
Prairie View Donor Restricted Fund
Prairie View Inc. Endowment Fund
Rachel Stucky Charitable Fund
Railer 125 Endowment Fund
Randall and Carol Goering Family Charitable Fund
Richard and Leah May Ross Charitable Remainder Fund



THE WELL'S TRUST

The late D. Bradford Wells and his wife Mary Jean shared a vision of what could be accomplished both through their charitable trust and a local community foundation.

The Wells family first established their charitable lead trust fifteen years ago. Brad, a local businessman and two-term mayor of Newton, was one of the original founders of the local healthcare foundation that eventually became an integral part of the Central Kansas Community Foundation. At the time he said, "I believe in this, I believe in its future and what we can accomplish if people work together."

Clearly, Brad Wells was a visionary man. In the fifteen years since its inception, the Wells Charitable Trust has distributed nearly a million dollars to non-profit organizations in Newton, Harvey County and beyond. 2011 saw the final distribution from this fund. We are especially proud to have been able to facilitate the gifts from the Well's Charitable Trust.

Richard and Leah May Ross Memorial Scholarship Fund
Ron and Marnette Hatchett 10K Fund
Sand Creek Trail Endowment Fund
Second Century Library Endowment Fund - Newton
Second Century Library Foundation - Newton - Operating Fund
Stucky Family Charitable Fund
Susan Claassen Endowment Fund
Susan Claassen Nursing Scholarship Fund
THUMCF Baber Endowment Fund
THUMCF Building Fund
THUMCF Children and Youth Endowment Fund
THUMCF Education Endowment Fund
THUMCF Landscaping Endowment Fund
THUMCF Library Endowment Fund
THUMCF Missions Endowment Fund
THUMCF Mosier Endowment Fund
THUMCF Music Endowment Fund
Torline Family Scholarship Fund
Trinity Heights United Methodist Church Foundation
Operating Fund
United Way Agency Fund
United Way Fund
USD 373 Education Endowment Fund
Walton Rural Life Charter Operating Fund
Walton Rural Life Charter School Foundation
Wanda Sharp Jansen Charitable Remainder Unitrust
Warkentin House Endowment Fund
Warren R. and Lucile M. Kinney Memorial Endowment Fund
Wells Community Endowment Fund
Wells Donor Advised Fund
Women's Community Fund



AFFILIATE PARTNERS

The Central Kansas Community Foundation affiliates are as unique as the communities they serve. Only by the means of the dedicated individuals serving their communities on their respective foundation's board of advisors can CKCF have the impact and presence it does in Central Kansas. They regularly monitor and assess the needs of their communities and encourage philanthropy as a means of meeting those needs, with a proven record of success.

NORTH NEWTON COMMUNITY FOUNDATION

EST. 2011

The idea of a Community Foundation in North Newton came up for discussion at our City Council meeting in early 2011. Soon thereafter, the City Council approved a "seed money" grant of \$5,000 to initiate the funding program, later designed as a dollar-for-dollar matching fundraising program. By early fall, the idea had gained sufficient motivation to lay the groundwork for election of officers. That was done with good community representations, including representatives from the City Council, Kidron Bethel Village, Bethel College and the community at large. The North Newton Community Foundation (NNCF) was legally established on December 7, 2011 with generous technical/administrative help from Sandi Fruit and John Torline.

Our first donation to the NNCF Impact Fund was from Sher Classen Neufeld, the City Clerk

of North Newton. Although she does not live in North Newton, she has been a very competent and dedicated employee of the city for several years. On the day of our formal establishment, December 7, she presented to the NNCF a check for \$5,000! - The first and to date the largest single donation to the NNCF. In 2011, she served as Vice-Chair of our Board.



Jim Goering, Bill Hake and Sandi Fruit gather to sign the North Newton Community Foundation affiliate agreement.



Building on a tradition of giving in North Newton, the NNCF Board has determined that funding priorities will relate to expansion of educational opportunities, cultural enrichment, improvement of human health and the physical environment.

Jim Goering, Chair

FUNDS

North Newton CF Operating Fund
North Newton CF Impact Fund
Vincent Hill Memorial Park and Playground Fund

HILLSBORO COMMUNITY FOUNDATION

EST. 2004

One of the bright spots in Hillsboro's economic picture during 2011 has been the continued growth of the Hillsboro Community Foundation. Thanks to a variety of factors, the charitable funds managed by the foundation, which formally was launched only five years ago has hit the million dollar mark. The best news of all? Some \$28,000 in grants were awarded in 2011 to help set a variety of needs within the community.

In February, Hillsboro Community Foundation (HCF) awarded 14 area organizations and programs a total of \$12,000. In the fifth round of its Hillsboro Area Impact Fund grants.

In July a \$16,000 grant was awarded to USD 410 for the coordination and collaboration of health services. This grant was a direct result of the Marga Ebel Fund estate gift.

HCF also has accepted several other community-based funds to manage under its umbrella that were previously managed by USD 410. The are the John A. and Harriet Kizler Wiebe Fund and

two from Robert Sextro, the C.M. Sextro Memorial Math Scholarship Fund and the Hillsboro High School Citizenship Award Fund.

Our success is due primarily to strong, consistent leadership on our board. The board has always understood that this is a long-term commitment and that the foundation is about ensuring the future of the community

Kathy Decker, Director

FUNDS

Marga Ebel Health Fund
Hillsboro High School Citizenship Award Fund
Hillsboro Impact Fund
Hillsboro Senior Center Endowment Fund
Hillsboro CF Operating Fund
KHF Operating Endowment Fund - Hillsboro
Kleiber Family Charitable Fund
Kansas Health Foundation Fund - Hillsboro
Lehigh City Parks Fund
Clariece and Dean Schroeder Endowed Fund
C. M. Sextro Memorial Math Scholarship Fund
Tabor College Expanding Our Influence Fund
John A. and Harriet Kizler Wiebe Fund for
Hillsboro High School



FLORENCE COMMUNITY FOUNDATION

EST. 2011

The Florence Community Foundation was created in January of 2011 by several individuals who hope to make a difference in the community of Florence through the foundation. The first year the group received donations in the amount of \$17,000. We hope to be able to contribute to the growth of Florence in years to come. We received a \$10,000 donation from a community member and several other smaller donations. We have experienced support and had excellent learning opportunities through the Central Kansas Community Foundation. We look forward to 2012 with great anticipation.

The Florence Community Foundation is building a tradition of giving by granting funds to the local Pride Organization for beautification of Main Street through flowers and for a children's garden club. Our foundation completed our first year of existence with high hopes for the future. We look

forward to helping build a legacy of giving to improve the quality of life for our community.

Phoebe Janzen, Secretary



(Front row L-R) Sara Dawson, Ed Robinson, Fred Bichet, Carol Bichet, Kathleen Ludwig, (Back row L-R) Angie Baur, Holly Pereillo, Mike Pereillo were present for the signing of the Florence Community Foundation affiliate agreement.

FUNDS

Florence CF Operating Fund
Florence CF Community Impact Fund
Florence Gymnasium Fund

CENTRAL KANSAS COMMUNITY FOUNDATION - BUTLER COUNTY

EST. 2010

2011 was a year dedicated to giving, growing and gratitude. More than \$65,000 in grants and scholarships were distributed in 2011.

To celebrate the **GIVING** an Award Banquet was held at Fulton Family Farms in Towanda on June 11. Over 120 participants attended this evening of recognition while reflecting on Butler County heritage with exhibits of old-time trades and wears, with additional entertainment that included the "Butler County Jail" fundraiser. **GROWING** in 2011 included over \$160,000 in contributions to a variety of new and existing funds. Because



of this, the GROW II goal was met by year-end reaping nearly \$70,000 in matching dollars to a public health fund, an unrestricted grantmaking fund, and an operational endowment. Finally, our third tradition - **GRATITUDE**. To our donors, supporters, recipients and community. Because of all of you we are fulfilling our mission to support charitable interests in Butler County.

A special sense of gratitude touched us close to home in 2011 when we lost a beloved friend and leader of our board - Wayne White. Before losing his battle to cancer he arranged with his wife to establish the Wayne White Endowment. It was an honor to establish this fund to fulfill his wishes and be a part of this ever-lasting legacy. The work we do is so personal, so important, so moving.

Learn more at www.ckcf-bc.org. We look forward to 2012!

Carol Knolla, Chair



Carol Knolla, Chair of Board, and Dave Matthews present Jennifer Stanyer with a grant during the annual grant and scholarship awards and donor appreciation event.

FUNDS

Alex's House Fund
RD Allen Scholarship Fund
Susan B. Allen Memorial Hospital
Public Health Fund
Andover Police K-9 Unit Fund
Clifford and Rubye Angleton Scholarship Fund
ARC of Butler County Endowment
ARC of Butler County Fund
Augusta Caring Center Fund
Jenny Sundgren Baker Memorial Fund
BCA Community Building Fund
Beaumont Water Tower
Big Brothers Big Sisters Fund
Birth to K Alliance Fund
Tina Jo Wedel Burton Scholarship Fund

Butler County Fair Association
Fairgrounds Improvement Fund
Butler County Fire Chiefs Association
Butler County Mid Kansas Community Action
Program Fund
CDDO of Butler County Fund
Downtown Augusta Inc. Community Event Fund
Community Foundation of Greater Butler County
Operating Fund
Early Childhood Literacy Fund
El Dorado Community Fund
El Dorado Prairie Port Festival Fund
Employment First of Butler County
Task Force Fund
Flinthills Services, Inc. Fund
Chelsea Gerbitz Community Memorial Fund
Chelsea Gerbitz Scholarship Fund
Greater Butler County Community Impact Fund
KHF - CKCF Butler County Community
Foundation Operating Endowment Fund
Kansas Health Foundation Fund- Butler County
Kansas Health Foundation Children's Fund



CKCF - BUTLER COUNTY FUNDS

Leadership Butler Children's Fund
Leadership Butler Fund
Gary McEachern Memorial Scholarship Fund
Potwin Community Fund Endowment
Sally Annette (Souder) Puckett Fund
Sally Annette (Souder) Puckett
Scholarship Endowment
Remington USD 206 Fairy Godmother Fund
Remington USD 206 Larry Brown
Memorial Scholarship Fund
Remington USD 206 Edna and Mae Mertz
Scholarship

Remington USD 206 Pat Halabi Memorial
Scholarship
Remington USD 206
Student Assistance Fund
Remington USD 206 General Endowment Fund
(Klaassen Athletic Memorial)
Rose Hill Recreation Fund
Sunlight Foundation Fund (SCARF)
TRI County CASA
Wayne White Memorial Fund
Whitewater Community Fund
K.T. Wiedemann Children's Fund
of Butler County

GOESSEL COMMUNITY FOUNDATION

EST. 2011

2011 was a milestone year for the Goessel Community Foundation as it was the founding year. During 2011, the members of the affiliate board of advisors attended trainings, involved themselves in several cooperative and industry events and began to raise awareness for the foundation in the Goessel community.

The Goessel Community Foundation is building a tradition of giving by laying the foundation for charitable giving in the Goessel community.

Cindy Wiens, Chair
Anita Goertzen, Secretary/Treasurer

FUNDS

Goessel Community Impact Fund
Goessel Community Foundation Operating Fund
West Branch Park Improvement Fund



(Back row L-R) Peggy Jay, Patsy Dirksen, Karen Dalke, Myron Schmidt (vice chair), Linda Peters, John Fast (Front row L-R) Anita Goertzen, Sec/Treas, Cindy Wiens, Chair, Bill Hake and Sandi Fruit lay the foundation for the Goessel Community Foundation in 2011.



HESSTON COMMUNITY FOUNDATION

EST. 2008

2011 was a busy year for the Hesston Community Foundation (HCF). The Foundation experienced significant progress which in turn earned it some impressive accomplishments. June of 2011 found the board and staff of Hesston Community Foundation hard at work behind the scenes planning strategies to bring about public awareness of the Foundation and its endowment building efforts. In September the Foundation launched a fund-raising/marketing campaign with a kick-off during Hesston's Coming Home weekend.

The Foundation announced at this time that HCF was awarded a \$400,000 challenge grant from the Kansas Health Foundation.

Marcy Thiesen, Director

FUNDS

Hesston CF Operating Fund
Hesston CF Operating Endowment Fund
Hesston Community Impact Fund
Hesston Schools Endowed Fund
KHF - Hesston Community Foundation
Operating Endowment Fund
Kansas Health Foundation Fund - Hesston



Natise Vogt, Principal & Foundation Chair and Sommer Smith (seated L-R) Ronda Rouz, Doug Trumble, John Blazek, Erik Lang sign the Walton Rural Life Center Charter School Foundation Affiliate Agreement.

WALTON RURAL LIFE CENTER CHARTER SCHOOL FOUNDATION

EST. 2011

During the 2011 year, the Walton Rural Life Center (WRFC) Foundation worked on raising funds for an addition to the school. The school has a waiting list for students to attend Kindergarten through the 2017 school year. There were 43 students on a waiting list to start Kindergarten for the 2012-2013 school year. To be able to accommodate all of these students it was decided that the school needed to add two rooms on to the current metal building behind the school.

The 2011 year, PBA architects were asked to work on some designs for additions to the school. They came up with Phases 1-6 adding a few rooms



on at a time. The initial phase of adding on two rooms was estimated at \$300,000. The WRLC Foundation then began looking at ways to raise the money to make the addition happen for the 2012-2013 school year. A sign showing the initial 3 phases was put up in front of the school to raise awareness and interest. The architects have created boards to share with potential donors to illustrate the plans and potential advertising for their benefit.

Fundraisers included sending mailers to all Walton school alumni, presentations to various civic groups, and publicizing the plans via internet, newspaper and word of mouth. The Harvey

County Farm Bureau gave a generous donation of \$10,000 to the foundation. Alumni have also given personal donations. Various agriculture businesses have been contacted about the opportunity to become a corporate sponsor of the school. To date, there has been interest and promises of donations, but nothing has materialized yet.

Natise Vogt, Chair

FUNDS

Walton Rural Life Charter Operating Fund
Walton Rural Life Charter School Foundation

PEABODY COMMUNITY FOUNDATION

EST. 2000

2011 was an outstanding year for the Peabody Community Foundation (PCF). The total assets exceeded the \$500,000 level and will continue to grow in the future. Donations and matching funds from the Kansas Health Foundation received in 2012 are coming close to exceeding \$600,000, of which five percent will come back to the Peabody Community each year.

PCF is now in the middle of the Grow II campaign and when the campaign is completed in 2015 there will be over \$850,000 with the matching funds. This means that about \$42,500 will be allocated to the community each year in the future. About \$8,000 will be available for grants for

the community, \$4,500 will be for maintaining the Peabody community Foundation, and about \$30,000 will be allocated to organizations within the PCF.

The Peabody Community Foundation received an Estate Gift from Rosemary Litton, who grew up and attended school in Peabody, graduating from Peabody High School. Her gift of \$235,000 was an endowment to three organizations in Peabody. The Peabody Main Street, the Peabody Historical Society and the Peabody/Burns High School each received an endowment of one-third of the total gift. From the earnings the three will receive \$3,900 each year to help with their organizations. In addition, this donation created \$58,500 of matching funds from the Kansas Health Foundation for the GROW II Grant.

Building on a "Tradition of Giving" in Peabody



we are “Helping Today - Shaping Tomorrow” continue to be the goal for building a “Tradition of Giving” in the community.

Lynn Berns, Chair

FUNDS

Catlin Community Cemetery Designated Fund
Edna May Ewert Memorial Scholarship Fund
Ralph and Una Ewert Vocational
Scholarship Fund
KHF Operating Endowment Fund - Peabody

Kansas Health Foundation Fund - Peabody
Peabody Community Foundation
Endowment Fund
Peabody Community Impact Fund
Peabody Community Foundation Operating Fund
Peabody Historical Society Endowment Fund
Peabody Mainstreet Association
Endowment Fund
Peabody United Methodist Church
Scholarship Fund
Vernon and Laura Slocombe Memorial
Scholarship Fund
USD 398 Education Endowment Fund
USD 398 High School Endowment Fund

TRINITY HEIGHTS UNITED METHODIST CHURCH FOUNDATION

EST. 2010

Trinity Heights United Methodist Church Permanent Endowment Fund used the annual returns, \$16,000, to enrich their program of work in the areas of Music, Children and Youth, Education, Library, Missions and Building improvements. Fourteen college scholarships were awarded to members for the 2012-2013 school year from the Education Endowment Fund.

Marjorie Warta, Chair

FUNDS

THUMCF Baber Endowment Fund
THUMCF Building Fund
THUMCF Children and Youth Endowment Fund
THUMCF Education Endowment Fund
THUMCF Landscaping Endowment Fund
THUMCF Library Endowment Fund
THUMCF Missions Endowment Fund
THUMCF Mosier Endowment Fund
THUMCF Music Endowment Fund
Trinity Heights United Methodist Church
Foundation Operating Fund



HALSTEAD COMMUNITY FOUNDATION

EST. 2010

The Halstead Community Foundation was formed and affiliated with the Central Kansas Community Foundation in December 2010. Starting with just a few thousand dollars at the end of 2010, the Halstead Community Foundation grew to nearly \$200,000 by the end of 2011. The Halstead Community Foundation was a successful grantee of a \$300,000 GROW II grant from the Kansas Health Foundation in its first ever grant application.

During 2011, three dedicated funds were created: the Kansas Learning Center for Health Fund; the Roy E. Meyer Memorial Visual Arts Scholarship Fund; and the Elizabeth Rupp Lawson Scholarship Fund. Throughout 2011, initial and continuing contacts were made which have resulted in the creation of six additional funds subsequent to the end of 2011.

In its first full year of existence, the Halstead Community Foundation focused attention to fundamentals, communication and understanding so that it has a firm grasp of where it is headed and a plan for success. Year two promises to see

continued asset growth and greater community understanding, support and participation.

Karen Koehn, Chair

FUNDS

Halstead Community Foundation Operating Fund
Halstead Community Foundation Impact Fund
Kansas Learning Center for
Health Endowed Fund
Rupp Lawson Scholarship Fund
Roy E. Meyer Memorial Visual Arts
Scholarship Fund



Sandi Fruit, Megan Evans, Dr. Colin Bailey, Bill Hake and Karen Koehn sign the Halstead Affiliate Agreement.



FRIENDS OF THE FOUNDATION: A TRADITION OF ENGAGEMENT

IT TAKES ONLY ONE INDIVIDUAL to make a difference.

Whether these generous individuals contributed to existing funds, established new funds or contributed to a fundraising campaign, they are engaged! They have their finger on the pulse of their community, understand the needs of their neighbors and take pride in strengthening the foundation of their hometown.

The Foundation extends its sincerest gratitude for their contribution to their chosen charitable organization.





DONORS

The hundreds of generous individuals and businesses listed have helped the foundation have a significant impact on the quality of life here. They represent the small group of thoughtful people changing the world, making a difference right here at home. It is the Foundation's commitment to ensure that the gifts given on behalf of these individuals are managed in a responsible way and that the distribution of grants is handled with the highest level of care in honor of our donors.

Adrian & Luberta McCulloch
Adrian & Pankratz, P.A.
Advanced PT of Newton, L.L.C.
AG Service, Inc.
Alan & Carol Roth
Alan & Jennifer Vogts
Allan & Virginia Cafferty
Allen & Joni Jantz
Allen Unruh
Allyson & Bradley Weber
Alma Heppner, *Account for Charitable
Activities and Memorials*
Alvin & Priscilla Musser
American Enterprise Investment Services Inc.
American Skandia Distribution Fund
Andrew & Gina Jacobs
Angie Baur
Anita Buchanan, *Buchanan Human Resources
Consulting*
Ann Carpenter
Anton & Jessie Epp
Arlan Yoder
Arlen & Paula Anderson
Asbury Park
Aubrey Patterson, *Hutchinson Community Foundation*
Audra Kenneson

Augusta Optimist Club
Bank of Whitewater
Barbara Nowak
Barbara Thompson
Barbara Williams, *Hesston Women's Civic Club*
Barry Peter
Beaumont Community Assn, Inc.
Beaumont Hotel/SJC IV Corporate
Becky Cooper
Becky Wolfe
Beth Vannatta
Bethel College
Bethesda Home
Bill & Pam Armbrister
Bill & Rosetta Hake
BMG of Kansas, Inc.
Brad Heppner, *Brad Heppner Family Trust*
Bradley & Rita Bartel
Brandon Patry
Bret & Anne Talbott
Brian & Cindy Preheim
Bruce & Jean Smith
Burton & Lois Allerton
Butler County
Byron & DeLonna Lehman
Byron & Marjorie Warta



Caring Hands Humane Society
Carol Wohlford
Carolyn Moore
CDH Incorporated
Cecil Unruh
Celia Gross
Central National Bank
Chad Wilkins, *Resource Center for
Independent Living, Inc.*
Charles & Joyce DeForest
Charles & Nancy Craig
Charles & Susan Good
Cherie Copsey, *The Bright Blessings Trust*
Chet & Jeanette Roberts
Cindra Brandl
Citizens State Bank
City of Goessel
Clariece Schroeder
Coleen Miller
Community National Bank
Conrade Insurance Group Inc.
Cooperative Grain & Supply
Countryside Feed LLC
Cynthia Rhodes
D. Ted & Alisa Krehbiel
Dale & Lucile Hochstetler
Dale & Rachel Winter
Dalinda Hamilton
Dan & Carol Zerger
Dan & Kamme Erb
Darrell & Cynda Conrade
Dave & Debra Schrag
David & Barbara Burns
David & Joanne Loewen
David & Kim Matthews
David & Sandra Adams
David & Susan Tosch
David & Susan Wiens
David Craig
David K. Puckett
David Singleton, *David Singleton LUTCF, CLTC*
David Sundgren

Dean & Sandra Patterson
Debbie Palacios
Deborah Wilkerson, *Greater Horizons*
Delbert & Janine Peters
Delbert & Linda Eden
Demo Sales, Inc.
Dennis & Jennifer LeFevre
Dennis & Patricia Howard
Diana White
Diane Shumate
Dick & Janice Schmidt
Don & Pamela Weaver
Donald & Ellen Patry
Donna Dickerson
Douglas & Rae King
Douglas & Robin Taylor
Douglas & Teresa Cole
Douglas Valecia, Scribner
Duane & Billie Barker
Dwight & Helen Beckham
Edna Graber
Edward & Beth Ann Kingsley
Edward Hund, *Edward J. Hund Trial Attorney PA*
Edwin & Brenda Nyberg
Edwin & Eleanor Bolain
Edwin & Ella Regier
Edwin & Neva Robinson
Elbridge & Letha Ruth Walker
Eldon & Betty Baker
Eldon & Viola Neufeldt
Ella Wiebe
Ellen Schraeder
Elton & Ella Berg
Emmit & Fern Grove
Emprise Bank
Eric & Francia Bird
Eric & Gretchen Schrag
Ernest Dirks
Ernst & Margie Wiens
Errol & Suzanne Luginbill
Ervin & Bettye Hiebert
Erwin Olson



Ethan Potter
Eugene & Sharon Haydock
Eugene Wendling
Eulala Pankratz
Evelyn Scheffler
Everence
Excel Industries, Inc.
Feisal & Ellen Jahay
Ferrell Ranch
First Bank
Floyd & Lovella Thiessen
Frances Allen
Frances Diehl
Frances Erdwien
Frank & Sandra Fruit
Franklin & Kathleen Stucky, *Stucky Investments*
Franklin Stucky, *Harley J. Stucky Family Trust*
Fred & Helen Berns
Fred & Jan Saab
Gary & Gladys Voth
Gary & Jana Crittenden
Gary & Marjorie Wohlgemuth
Gary & Victoria Hill
Gary Sack
Gayle Arnett, *Susan B. Allen Memorial Hospital*
Gene & Christine Eilerts
George & Kerry Lawandus
George & Patricia Kasper
Gerald & Karen Koehn
Gerald & Kathleen Lindholm
Gerhard & Yvonne Fast
Gladys Janzen
Glenn & Becky Diehl
Gordon & Theresa Houser
Grant & Lori Williams
Great Plains Federal Credit Union
Greg & Carol Raleigh
Gregory & Abbi Balsmeier
H. Bart Baker
Harlan & Penny Gitchell
Harley & Ruby Stucky
Harold & Arlene Thiessen

Harold & Evelyn Gregg
Harold & Linda Tegethoff
Harold & Sharlene Brooks
Harold & Susan Kruger
Harold Poe, *Harold Poe Living Trust*
Harvey County Farm Bureau Assoc.
Harvey County Master Gardeners
Helen Galloway
Hertzler Research Foundation
Hillsboro Community Hospital
Hillsboro Golden Years Club, Inc.
Hillsboro State Bank
ICI
Inez Koehn
Intrust Bank
Irene May Jantz
J. & Brenda Brennan
J. & K. Linnens
J. Saunders, *City of Goessel*
Jack & Nyla Hobbs
James & Barbara Stucky
James & Christy Brenneman
James & Darlene Hiebert
James & Donna Anderson
James & Julie Krehbiel
James & Lisa Hoffman, *Goessel Chamber*
James & Sherrill Glanzer
James Will
Jan Hoberecht
Janice Hiebert
Janice Reimer
Javier & Paula Soto
Jean Thiessen
Jeanette Knittel
Jeff & Marcy Thiesen
Jeff Hinkle, *Heritage Highland Finance*
Jeff Hinkle, *Highland Consolidated*
Jeff Hinkle, *Highland Consolidated Bus Hlds*
Jeffrey & Laura Ensey
Jeremy & Ashley Bridgeman
Jerry & Janet Elaine Unruh
Jeryl & Dianne Unruh



Jessie Kaye
Jim & Diane Bartel
Jimmy & Billie Christine Roth
Joan Turetsky
Joe & Leslie Luinstra
Joel & Diania Pile
John & Barbara Sage
John & Bernice Esau
John & Eloise Faul
John & Hilda Vogt
John & Janny Fast, *Goessel Chamber*
John & Kathryn Parker
John & Leah Eads
John & Patricia Morton
John & Sandra Zerger
John & Sher Neufeld, *Rebecca L. Walsh Insurance Agency, Inc.*
John Barber, *Edward Jones*
John Morton, *USD #373 Newton*
John Sadowsky
John Swarm
Jon & Libby Stucky
Jonathan & Sue Ann Jantz
Joseph & Joy Robb
Joshua & Sara Andrews
Joyce Barkman, *Milk & Honey B&B*
Judith Nagy
Justina Neufeld
K. & Susie Rhoades
Kansas Christian Home
Kansas Gas Service (KS)
Kansas Learning Center for Health
Karen DeGrazio
Karen Gilchrist
Karen Monroe
Kari Killman, *El Dorado Prairie Port Festival*
Karl & Marcia Brubaker, *Bethesda Home*
Karl Brubaker, *Hesston College*
Kathleen Decker
Kathleen Penner
Kaufman/GNCF Real Estate, LLC
Keith & Aldine Sprunger

Ken & Connie Rickard
Kendall & Alma Jean Thiel
Kenneth & Bonnie Funk
Kermit & Barbara Loewen
Kevin & Denise Goertzen, *Crossroads Credit Union*
Kevin & Mary Pyle
Kidron Bethel Retirement Services
Knudsen, Monroe & Company, LLC
Kurt & Elaine Horst
Kyle & Martha Good
L. & Rosalie Flickinger
Lane Holding Company
Lanny & Jane Jones
Larry & Dee Reber
Larry & Elva Evers
Larry & Margaret Jay
Larry & Margaret Jay, *Crossroads Credit Union*
Larry & Nelda Litwiller
Larry Sutherland
Larry Williams, *Elizabeth R. Lawson Testamentary Trust*
Laurin Herl
Lawrence & Susan Paine
Lee & Wanda Staab
Leroy & Linda Wetta
Lilee Staab
Lillian Harstine
Linda Klaassen
Lloyd Goering, *Lloyd Goering Revocable Trust*
Loren Groening
Lou Clennan
Louise Janzen
LuAlan & Judie Willems
M. Carstensen
Marga Ebel
Margaret Cook
Marianne Eichelberger, *Newton Public Library*
Marilyn Sjogren
Marion & Carolyn Rowland
Marjorie Huffman, *Prairie Trails Lady Golf Association*



Marjory Talbott
Mark & Andrea Schmidt Andres
Mark & Carolyn McGinn
Mark & Harriet Woelk
Marquette Eilerts
Martin Myers
Marvin & Marilyn Hatch
Mary Jane Olson
Mary Lewis
Mary Sue Voth
Matthew Spangler
Maurice & Joyce McClure
Mennonite Foundation, Inc. (The)
Merrill & Beulah Raber
Miah Schneider
Michael & Barbara Gomez
Michael & Carol Petitjean
Michael & Carolyn Kleiber
Michael & Jean Anderson
Michael & Melissa Hatchett
Michael & Morgan Marler
Michele Banks
Mid-Kansas Cooperative Association
Midland National Bank
Mike & Karen Jilka
Mike & Tracee Rhodes
Mikesell Family Foundation
Miriam Nace
Mitch & Becky Wolfe
Nancy Hedrick
Nancy McLeod
National Financial Services LLC
Newton Area Chamber of Commerce
Newton Fine Arts Association Inc.
Newton Healthcare Corporation
Neysa Eberhard
Norma Patton
O. Demain
Olin & Christine McKellip
Orlyn & Janis Zehr
Oxford Management Group, LLC
P T Plus, Inc.

Pamela McCullough,
Pamela R. McCullough, DDS, PA
Parsons Wealth Management
Patrick & Amy Flaming
Paul & Christine Unruh
Paul & Elaine Jantzen
Paul & Elizabeth Nelson
Paul Baker
Pauline Greenhaw
Peabody State Bank
Pearl & Velma Hadley
Perry & Cyndi Koehn
Pomeroy Group LLC
Prairie View, Inc.
Presbyterian Manors, Inc.
R. & Judith Mills
R. & Mary Ellen Avery
R. Michael & L. Gayle Arnett
Ralph & Charlene Janzen
Randall & Carol Goering
Randall & Debra Windsor
Randolph & Myrna Krehbiel
Rebecca Walsh
Regier Title, Inc.
Regina Dyck
Rex & Marion Regier
Richard & Colleen McCullough
Richard & Diane Claassen
Richard & Frances Siemens
Richard & Karen Fulk
Richard & Norma Tippin
Richard Corbin
Richard Humphrey
Robert & Arleen Moffett
Robert & Barbara Bunting
Robert & Carolyn Kaplan
Robert & Dawn Sage
Robert & Janie Mullet
Robert & Marilyn Sjogren
Robert & Marjorie Coffman
Robert & Susan Marshall
Robert Navrat



Roberta Tsao
Robin Stewart
Rodney & Donna Hague
Roger & Lavonne Hannaford
Ron & Deb Buhrman
Ronald McDonald House Charities Wichita
Rosalind Scudder
Rose Hill Bank
Rose Hill Recreation Commission
Rosemary Thorne
Roy & Arlen Unruh
Roy E Meyer Memorial Scholarship
Rubena Wiebe
Ruth Kaufman
Ruth Orpin
Ryan & Jennifer Simmonds
Ryan Bridwell
Samuel & Ruth Wellman
Sandra Fruit
Sarah Friesen
Schowalter Villa
Second Century Endowment Foundation
Sharon Scott, Morgan Stanley
Sharon Thiel
Shawn Holly Westervelt
Shelley Duncan, *Youthville*
Sherry Darnall
Sid & Kathy Whitcher
Somers, Robb and Robb
Sonja Koslowsky
Southern Kansas Telephone Co., Inc.
Stacy & Susan Turner
Stanley & Lean Clark
State Bank of Downs
State of Kansas
Stephen & Debra Allerton
Stephen & Lorraine Richards
Stephen & Suzanne Reynolds
Steve & Janie Fry
Steve Coen, *Kansas Health Foundation*
Steven & Karen Baker
Stuart Woodruff

Susan Lamb
Susan Thien
Sutherland Lumber Tallgrass, L.L.C.
Suzanne McEachern
Tammy Dishman, *Capitol Federal Foundation*
Teresa Huffman
Terrie & Sue Harsh
Terry & Ann Davidson
Terry & Dianna Mills
Terry & Lynne Fruechting
The City of Halstead
The Prudential Foundation Matching Gifts
Theodore & Shirley Goering
Thomas & Ann Adrian
Thomas & Nancy Hamel
Thomas & Patricia Leffler
Tri-County Foundation
Trilby Noll
Troy & Sara Dawson
Troy & Terri Arment
Unified School District No 373
USD #410 Hillsboro
Vada Ann McPheeters
Vaughn & Jan Langley
Vere & Beverly English
Vern & Jan Schroeder
Verna Mosiman
Vernon & Sharon Evers
Via Christi Hospitals Wichita Inc.
Victoria Adame
Vince & Melody Haines
Virgil & Winona Penner
Virginia Anderson
Walter & Esther Kleinsasser
Walter & Shirley Long
Warren & Jennie Etheridge
Warren & Ruby Dalke
Wayne & Diana White
Wells Fargo Advisors, LLC
Wells, *Donald & Mary Jean Charitable Trust*
Wendell Wiens
Wes & Ada Schmidt-Tieszen



Wheat State Manor, Inc.
Willard & Ruby Harms
Willard & Susan Crowe
William & Kala Nickel
William & Paula Keefer
William Martling
William A. Puckett
Willis & Marilyn Enszt
Wm. Todd Seymour
Xpressions By Kim



2011 FINANCIALS

THE HEALTH OF THE FOUNDATION is evident in the numbers that are represented in the 2011 audit. Thanks to the collective effort of all the individuals involved, including our donors, staff and volunteer board of directors, the Foundation experienced a year of outstanding growth, increasing not only the asset base, but the outreach service area as well.





2011 FINANCIAL STATEMENT

STATEMENT OF FINANCIAL POSITION Year Ended December 31, 2011

ASSETS

Cash and cash equivalents	\$	566,366
Pledges receivable, net		81,793
Assets held under trust agreements		410,389
Investments		9,945,751
Other current assets		934
Fixed assets		1,697

Total assets \$ 11,006,930

LIABILITIES

Accounts payable	\$	7,487
Annuities payable		11,643
Assets held under trust agreements		222,531
Assets held for others as agent		927,007

Total liabilities \$ 1,168,668

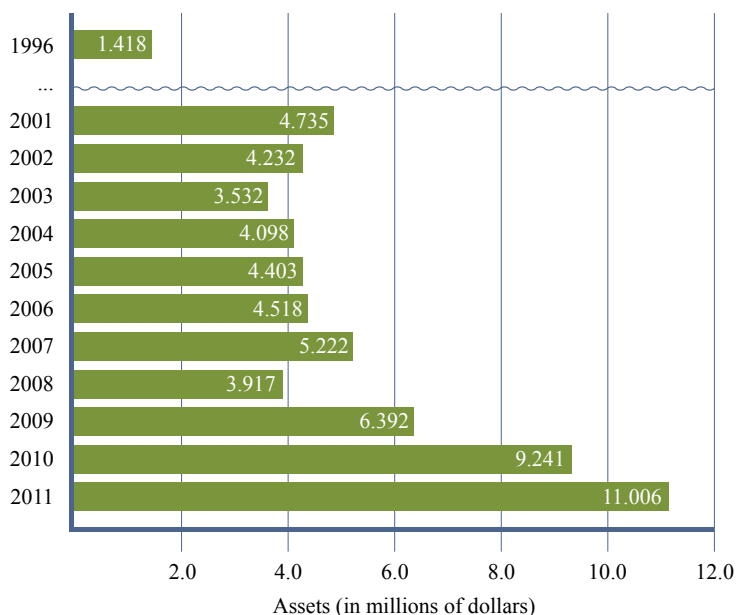
NET ASSETS

Unrestricted	\$	8,524,052
Temporarily restricted		193,215
Permanently restricted		1,120,995
Total net assets	\$	9,838,262

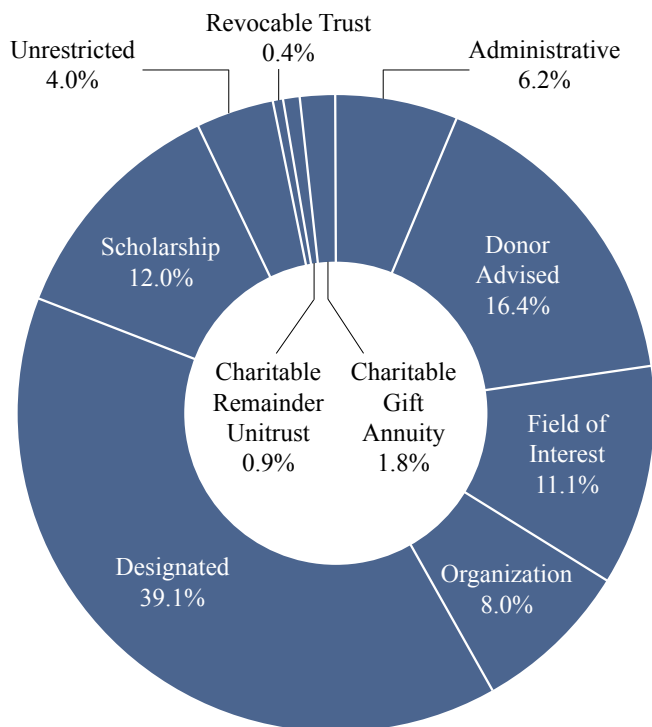
Total liabilities and net assets \$ 11,006,930

ASSET GROWTH

1996 - 2011



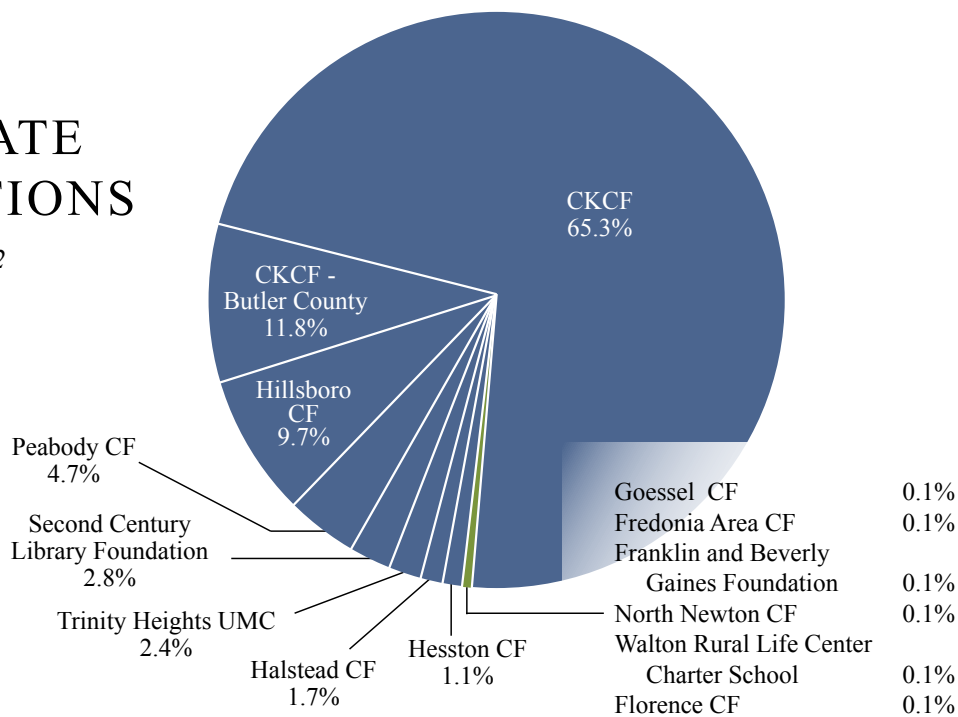
Complete audit report and IRS Tax Form 990 are available upon request.



PERCENT FUNDS BY TYPE

AFFILIATE ALLOCATIONS

March 2012



2012 BOARD OF TRUSTEES

EXECUTIVE COMMITTEE

Megan Evans, *Chair*
Bill Hake, *Immediate Past Chair*
Melvin Schadler, *Vice Chair*
John Suderman, *Treasurer*
Barb Andres, *Secretary*
Michael Barron, *Finance Committee Chair*

MEMBERS AT LARGE

Brad Bartel	Jennifer Vogts
Delores Dalke	Joel Pile
Dick McCall	Kathy Stucky
Don Patry	N.M. Patton
Dr. Colin Bailey	Teresa L. Huffman
Jay Holstine	Tim Hodge

2012 STAFF



CKCF STAFF

Front Row
Sandra Fruit, *Executive Director*

Back Row (L to R)
Angie Baur, *Associate Director*
Marnette Hatchett, *Office Manager*

AFFILIATE FOUNDATION STAFF

Marcy Thiesen, Director
Hesston Community Foundation
Kathy Decker, Director
Hillsboro Community Foundation
Marlene Gleason, Director
Halstead Community Foundation



301 N. Main, Suite 200
Newton, KS 67114

T 316-283-5474
F 316-283-5489

www.centrankansascf.org

An electronic copy of the annual report is
available online at www.centrankansascf.org

